



# HP NONSTOP DISASTER SOLUTION

@ SAAB

by Sture Larsson

## Disaster setup @ SAAB



NS14006



RDF



AUTOSYNC



NS1206



NS14002

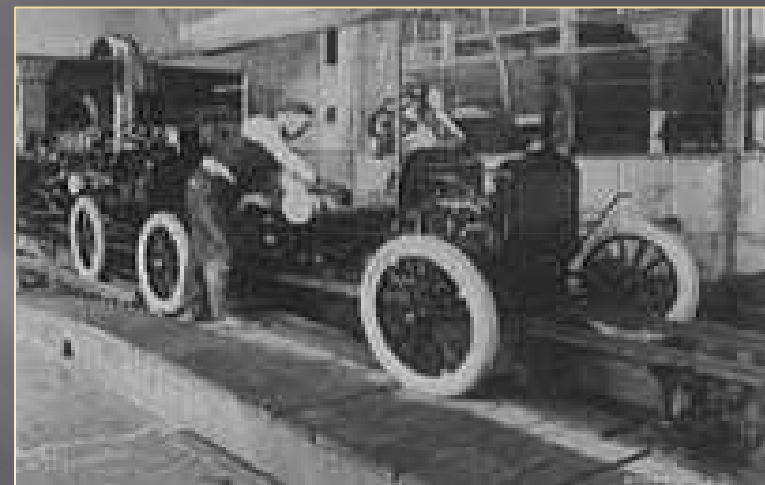
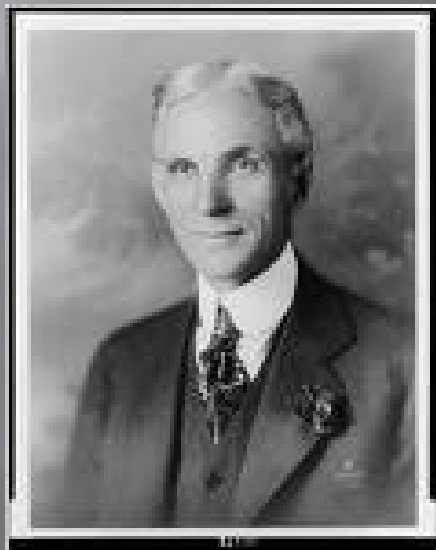


disaster ?...

## Perspective.....



**Ford revolutionized manufacturing. By 1914, his Highland Park, Michigan plant, using innovative production techniques, could turn out a complete chassis every 93 minutes. This was a stunning improvement over the earlier production time of 728 minutes.**



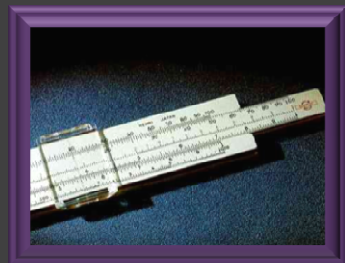
Slogan

“you could get whatever color you like,  
as long it is black”

## Perspective.....

Saab was originally created as a division of the Swedish Aeroplane Company (**S**vensk **A**eroplan **A**ktie**b**olag in Swedish). The company was established in 1937 for the express purpose of building aircraft for the Swedish Air Force. With the World War II nearing its end, the company began looking for new markets in which to expand.

In 1944, Project 92 began, with the goal of creating the first Saab passenger car. Five years later, the car SAAB 92 began production. The design highlighted the company's roots in aviation. Notably, the car's "drag coefficient" of 0.30 was the lowest of any production car at the time.



$$Cd = D / (A * .5 * r * V^2)$$



<http://www.antiquark.com/sliderule/sim/n909es/virtual-n909-es.html>

## "Build to order" @ SAAB

Saab settled a agreement to co-develop a new car platform with FIAT late 70', the SAAB 9000.

The marketplaces was set to 50 different countries (today 63+) . The car was specified with options and fully adaptable to all market regulations.

The assembly line was prepared and had/has 300+ segments/stations where chassis is assembled, station by station. Every car positioned on a station along the assembly line is individual according to market or customer.

The tool to "coordinate" the assembly line is HP NONSTOP starting at beginning 80' with TXP, CLX and then VLX, K1000, K2000, S72000, S78000 and now NS14000.





## "Build to order" @ SAAB



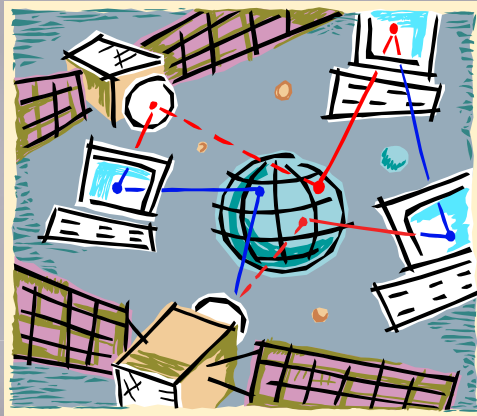
Material logistic & handling has been and is a key issue in car manufacturing.

The planning of material is from +52 weeks down to minutes and most of parts that later on is mounted on the cars is offloaded from trucks "just in time".

To "coordinate" the material logistic & handling application executes on the HP NONSTOP .....



## Disaster setup @ SAAB



The setup includes separate network covering two fire cells in one datacenter

NS14006

NS1206



RDF

AUTOSYNC



## Disaster solution @ SAAB



*off-the-shelf*

NS14006



RDF

AUTOSYNC

NS1206



Yearly  
failover test





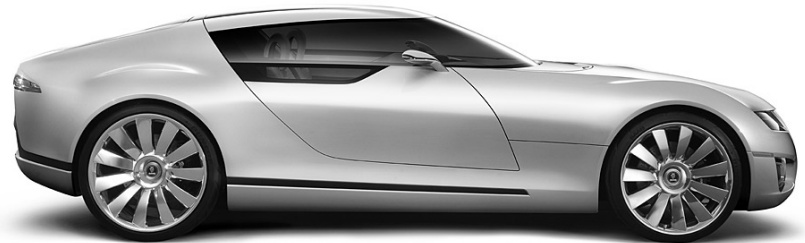
*End of story, time for commercial*



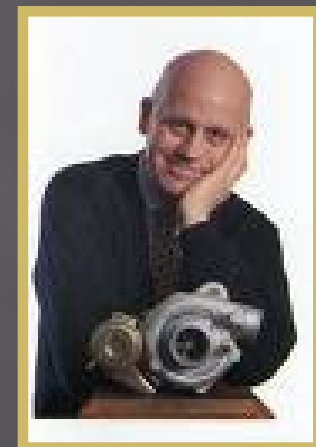
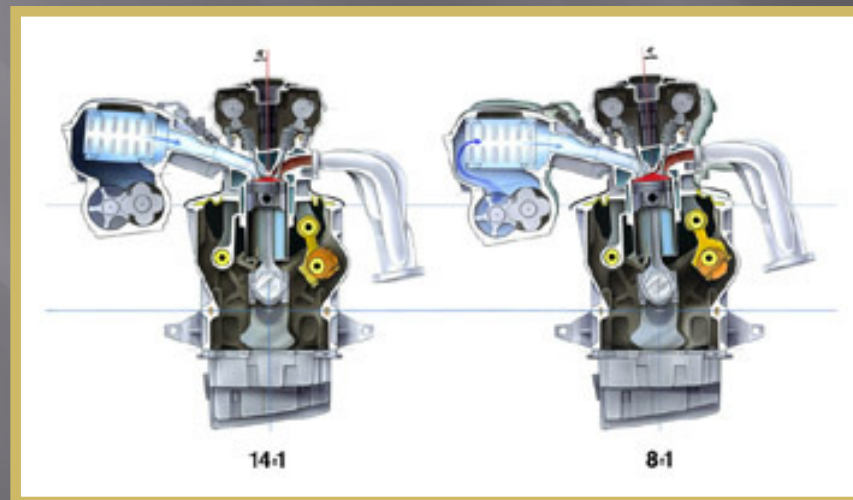
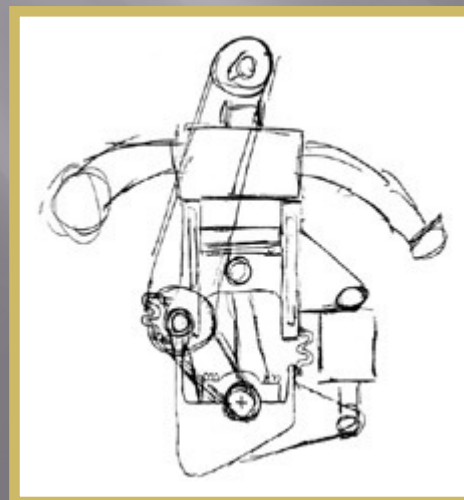
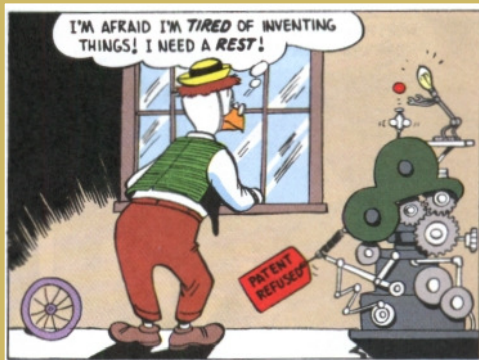
# The future @ SAAB



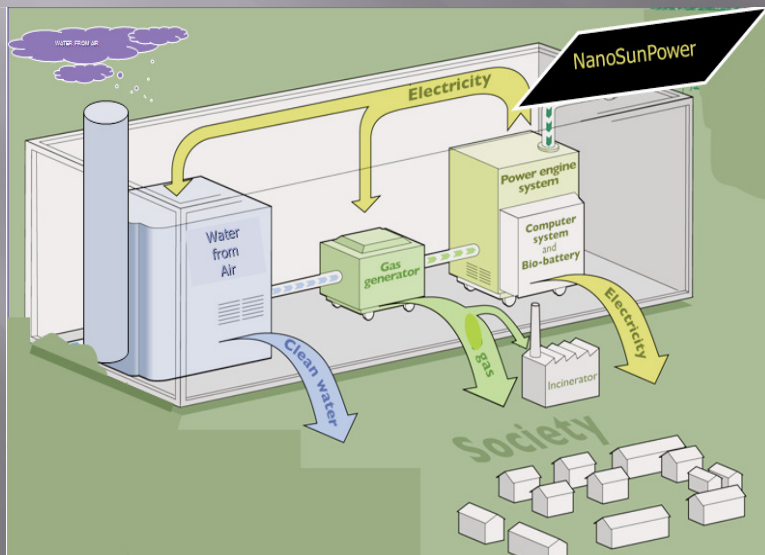
**Koenigsegg**



# Gyro Gearloose @ SAAB



# HydroAtomic Energy Concept





## Perspective.....

**Quiz :**  
**I want to now the**  
**.....**  
**where you can find**  
**this pool ?**

**And the winner of**  
**first prize is....**

