



**CSP Security.com**  
SOLUTIONS FOR HP NONSTOP SERVERS

# Extending Nonstop Security with CSP products

**Thomas Leeb**

Director Business Development  
CSP EMEA



**VNUG, Stockholm - Sep. 9<sup>th</sup>, 2008**



# Agenda

- **CSP intro and profile**
- **Regulations and Compliance**
- **Core Products**
- **News and developments**
- **CSP's Value add**



# About CSP

- **NonStop® DSPP Partner since 1987.**
- **Based in Toronto, Canada.**
- **Develop, Support and Distribute Security and Audit Solutions for the HP NonStop® Market.**
- **Strong skill set and experience in data security technologies.**
- **Focused on Product and Customer Growth.**

## Business Partner



## Integrity Ready Partner





# About CSP

- **Over 250 Customers and over 1000+ licenses World Wide**
- **Customers include:**
  - largest banks
  - Major Stock Exchanges
  - Defense and Healthcare organizations
  - Telecommunications providers
  - Manufacturers
- **CSP Products are:**
  - Itanium® / Blades ready.
  - Innovative.
  - Easy to use with GUI interfaces.

## Business Partner



## Integrity Ready Partner





# Partners & Distributors



High Availability  
Systems (Japan)



(UK-Europe)



(Mexico)



(Chile)



(Spain)

TandemSoft (Pty) Ltd  
(South Africa)



(Greece)

# Compliance and regulations



- **Regulatory Compliance**
  - International / Cross-national / National
    - **(US)** HIPAA, SOX
    - **(Canada)** PIPEDA, Bill 198
    - **(EU)** Directives 95/46/EC, OECD Guidelines, GLBA
    - **(Aus)** Privacy Act (2001), CLERP-9 (SOX)
    - **(Japan)** J-SOX
  - Industry Initiatives
    - PCI, Basel II
    - EU directive for Telcos
    - HIPAA



# Foundation for a Compliance Strategy

- HIPPA 1173 (d)(2)
- PIPEDA 4.7 Principle

SOX Sec 404

PCI DSS

•Worldwide

•State Laws

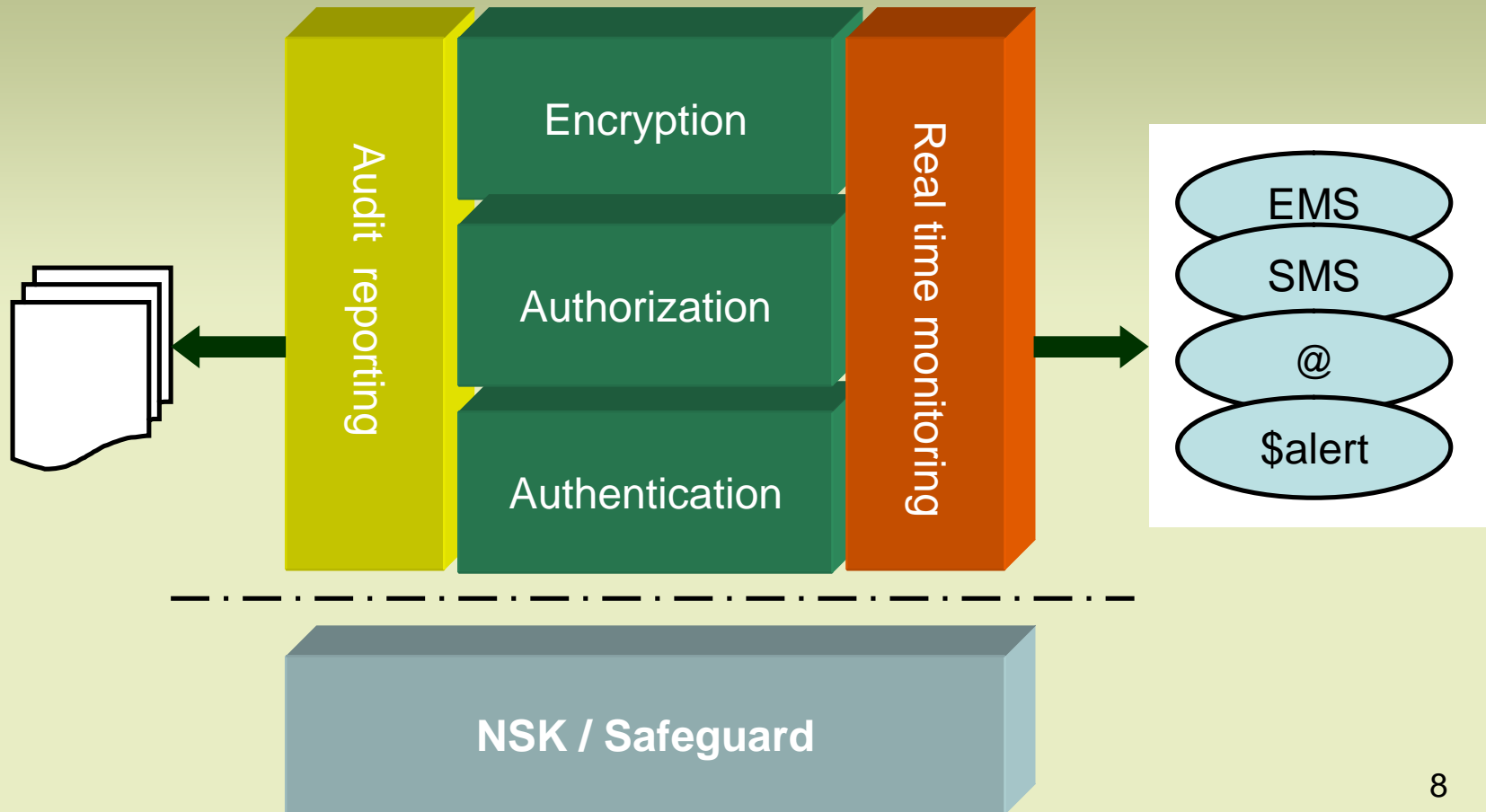


- Audit/Compliance
- Authentication
- Password Quality
- Data Encryption
- Command Control
- Access Control

European Privacy  
Directive 95/46 F

99 Standards

# So what does CSP focus on ?







**CSP Security.com**  
SOLUTIONS FOR HP NONSTOP SERVERS



# CSP Product Suite



# CSP Product Suite

- **ProtectXP Security Suite**

- Easy Safeguard Management (**Protect**)
- Comprehensive Audit Reporting (**AuditView**)
- Real Time Intrusion Detection and Alerts (**Alert-Plus**)
- Security Compliance Verification (**TSA**)

- **User Accountability**

- Control, filter and audit user access (**CSP PassPort**)

Integrity Ready  
Partner



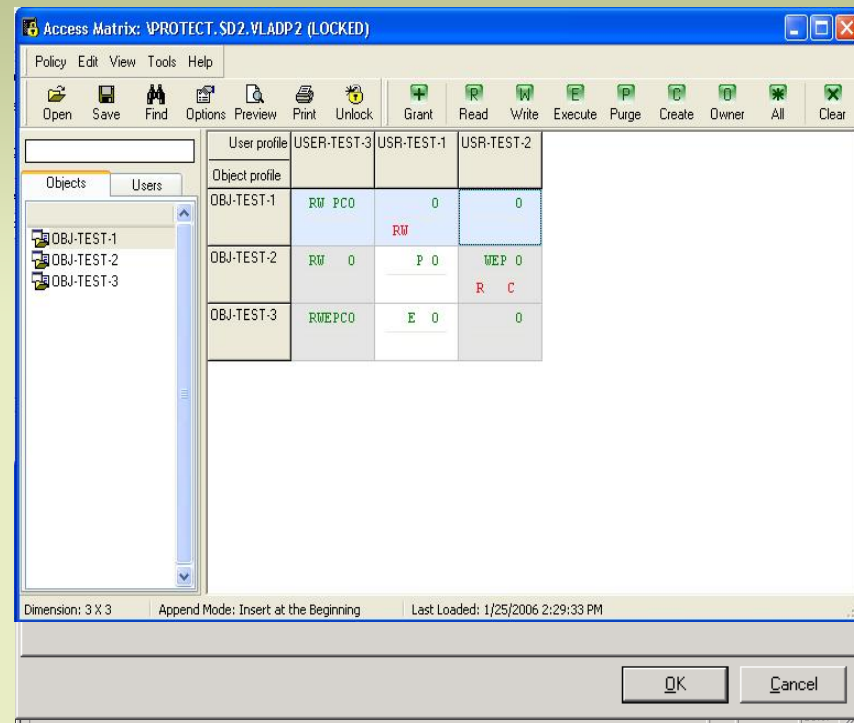


## CSP Product Suite (Cont'd)

- Password Management
  - User Network Password Management and Quality (**NetPass**)
  - RSA Two- Factor Authentication  
(**CSP Authenticator**)
- Encryption Products
  - Secure Server for Telnet Access
    - (**CSP Client Shield**)
  - Secure FTP File Transfer
    - (**CSP FTP Shield**)
- Centralized IdM (LDAP)

# Protect®XP

- Safeguard Management
- User Management and Accountability
- Policy Management
- Object Management
- Security Compliance Reporting
- Intrusion Detection
- Audit Reporting



Access Matrix: \PROTECT.SD2.VLADP2 (LOCKED)

User profile	USER-TEST-3	USR-TEST-1	USR-TEST-2
Object profile			
OBJ-TEST-1	RW PCO	0	0
OBJ-TEST-2	RW 0	P 0	WEPC 0
OBJ-TEST-3	RWEPCCO	E 0	R C

Dimension: 3 X 3    Append Mode: Insert at the Beginning    Last Loaded: 1/25/2006 2:29:33 PM

Buttons: OK, Cancel



# AuditView®

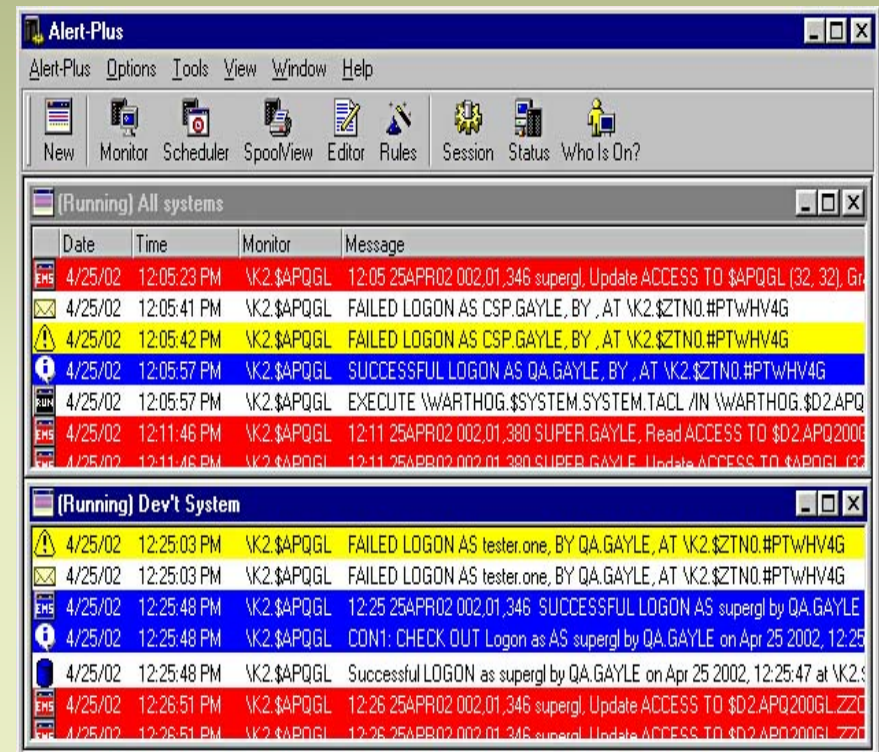
- Powerful reporting package for Safeguard audit
- Capability to sort data from multiple systems
- Provides archive capability to compress and store audit data
- Generates customizable reports using an easy point and click GUI





# Alert-Plus®

- Issues immediate alerts when a security policy has been breached
- Allows for user-programmable rules (and a rules wizard)
- Allows simple or complex rules, which involve several conditions that occur over time
- Enables real time actions
- BUILTINS allow you to define a complete rule in a single statement







# Tandem Security Analyzer

- A report generator that automatically audits and analyzes the security of HP NonStop® systems.
  - Key Features:
    - Detect security loopholes:
      - Weak passwords
      - Orphan files
      - Embedded logons
    - Identify exceptions:
      - Unauthorized Licensed or Progid'd programs.
      - Unauthorized access to sensitive files and programs

```
-----
$D2.LKPT261.CSPSRV Version 3.40 - System \PROTECT          30 Jun 06, 14:41
Copyright (C) 1997-2006 Computer Security Products Inc.
Run by: SUPER.SUPER (255,255) at $VSSCT
-----
CHECK TACL
-----

Checking TACL configuration
This checks the TACL CONFIGURATION attributes. These values control LOGON and
LOGOFF processing by TACL.

M01-02004 Warning: The AUTOLOGOFFDELAY attribute is set to -1.
RECOMMENDATION: Set AUTOLOGOFFDELAY to 15. Note: The AUTOLOGOFFDELAY
setting determines how many minutes TACL delays before
logging off an idle terminal.

M01-02006 Warning: The REMOTESUPERID attribute is set to -1.
RECOMMENDATION: Set REMOTESUPERID to 0. Note: If the value of
REMOTESUPERID is zero, TACL will not permit users at
remote terminals to logon as the SUPER ID. (A remote
terminal is one connected to another system in the
network).

M01-02009 Warning: The CMONTIMEOUT attribute is set to 10.
RECOMMENDATION: Set CMONTIMEOUT to 30. Note: This value specifies the
number of seconds TACL is to wait for a reply from $CMON.

M01-02014 Observe: The BLINDLOGON attribute is controlled by SAFEGUARD.
RECOMMENDATION: Examine the CHECK SAFEGUARD section of this report.

M01-02015 Observe: The NAMELOGON attribute is controlled by SAFEGUARD.
RECOMMENDATION: Examine the CHECK SAFEGUARD section of this report.

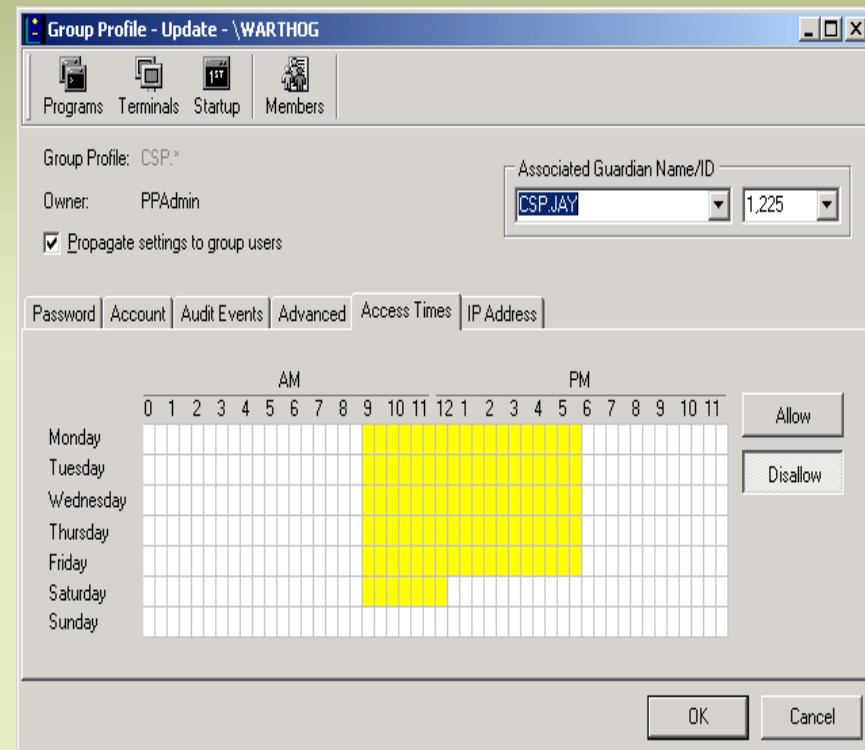
M01-02016 Warning: The STOPONFEMODEMERR attribute is set to 0.
RECOMMENDATION: Set STOPONFEMODEMERR to -1.

-----
PROTECT XP (2.61). Security Analysis Report                Page    2
```



# CSP Passport®

- User and command control,
- password quality enforcement
- comprehensive auditing
- allocates and filters user access to systems, programs and commands.
- Merged Audit: interrogation using the Safeguard reporting tool Auditview

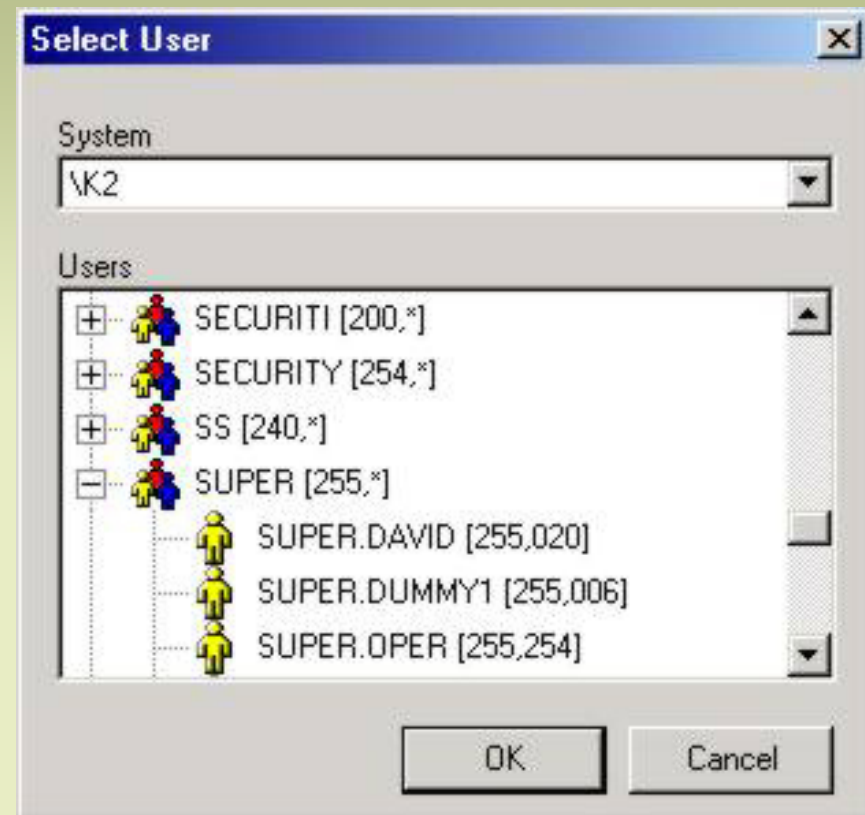






# CSP NetPass®

- easily manage passwords on many nodes at once
- This can be achieved through the GUI or from the command line interface
- CSP NetPass can operate with or without Safeguard installed.





# CSP SpoolView®

- As well as simplifying spooler job management and viewing, CSP SpoolView can also:
  - Email your jobs using your default email program
  - Discover which systems are available and view which spoolers are available on each system
  - Download print jobs to your PC
  - Save jobs as an edit file, plain text or as HTML on the NonStop Server
  - Save jobs as HTML or RTF (rich text format) on your PC

The screenshot shows the CSP SpoolView application window titled "CSP SpoolView - \K2.\$SPLS". The interface includes a menu bar (File, View, Tools, Help), a toolbar with icons for Up, Refresh, Delete, Properties, Send To, Find, Print, View, Options, and Status, and a System Tree on the left. The main area displays a table of print jobs with the following columns: Job#, Status, State, Location, Report, Pages, Owner, and Batch.

Job#	Status	State	Location	Report	Pages	Owner	Batch
1141	RDY		#ACODE	SUPER SUPER	18	255,255	
1140	HLD		#BACKUP	SUPER SUPER	401	255,255	121
1303	HLD		#BACKUP	SUPER SUPER	439	255,255	128
1138	HLD		#BKUPJOB	BACKUP 255 255	403	255,255	121
1139	HLD		#BKUPJOB	SUPER SUPER	1	255,255	121
1301	HLD		#BKUPJOB	BACKUP 255 255	441	255,255	128
1302	HLD		#BKUPJOB	SUPER SUPER	1	255,255	128
496	RDY		#CMPR11	SUPER SUPER	4	255,255	
497	HLD		#CMPR21	SUPER SUPER	6	255,255	
498	HLD		#CMPR31	SUPER SUPER	9	255,255	
499	HLD		#CMPR41	SUPER SUPER	11	255,255	
500	HLD		#CMPR51	SUPER SUPER	5	255,255	
501	HLD		#CMPR61	SUPER SUPER	20	255,255	
502	HLD		#CMPR71	SUPER SUPER	6	255,255	
574	HLD		#CMRULES	SUPER SUPER	13	255,255	
1077	HLD		#CMRULES	SUPER SUPER	18	255,255	
1081	HLD		#CMRULES	SUPER SUPER	18	255,255	



## New Products and Developments

- **CSP Navigator**
  - Managing OSS objects
  - introduce security policies for OSS
- **CSP NIMS**
  - IdM interface
  - LDAP compliant
- **CRM (Compliance Reporting Module)**
  - Report on gaps to industry standards and regulations
  - SOX, Basel II, PCI, HIPAA,



## **CSP's Value Add.**

- **CSP can:**
  - **Help in implementing and managing security policies.**
  - **Provide a proven solution to meet compliance and audit requirements**
  - **Simplify all aspects of Nonstop security management with easy to use GUIs**
  - **Complement and enhance the security services of HP**
- **CSP is:**
  - **A Professional and flexible organization - easy to work with.**
  - **Provider of proven, reliable products and services.**



## So if you...

- are forced to comply with security regulations / regular audit requirements,
- want to improve the security concept for your Nonstop systems
- simplify security management on your Nonstop systems,
- Want to identify potential loopholes on your current system and want to know how to close them,
- Want to be able to better track activities on your system and detect and react to suspicious activities,
- are interested to simply learn more about CSP,

***.... Please come and talk to us !***



**CSP Security.com**  
SOLUTIONS FOR HP NONSTOP SERVERS



Please contact Thomas Leeb for additional Information

[thomasl@CSPsecurity.com](mailto:thomasl@CSPsecurity.com)

+43 699 1856 3888